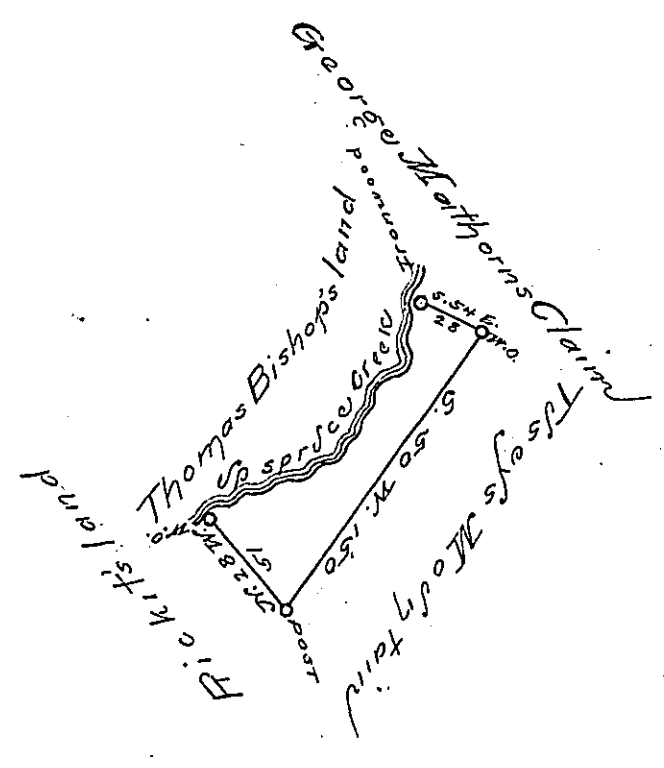


The Courses and Distances
Up Spruce Creek
from the W.O. to the Ironwood

- N. 74 E. 29
- East 24 24
- N. 54 E. 38
- N. 28 E. 10
- East 18
- N. 20 E. 31 Ironwood



Situation on the South side of Spruce Creek
about Three Miles from the Mouth in Huntingdon
County Franklin Township containing 22
ac^{rs} and the usual Allowance for Roads

Surveyed the 28th day of February 1791 In
pursuance of a Warrant to Shadrach Tipton
Dated the 28th day of January 1791.

To
Daniel Brodhead Esquire J. J.
John Canan D. S.

IN TESTIMONY that the above is a copy of the original remaining on file in the
Department of Internal Affairs of Pennsylvania, made con-
formably to an Act of Assembly approved the 16th day of
February, 1833, I have hereunto set my Hand and caused
the Seal of said Department to be affixed at Harrisburg, this

— sixth — day of — August — 1895.

James W. Latta
Secretary of Internal Affairs.